

TEL: (858) 621-2700
 URL: www.zcomm.com
 EMAIL: applications@zcomm.com

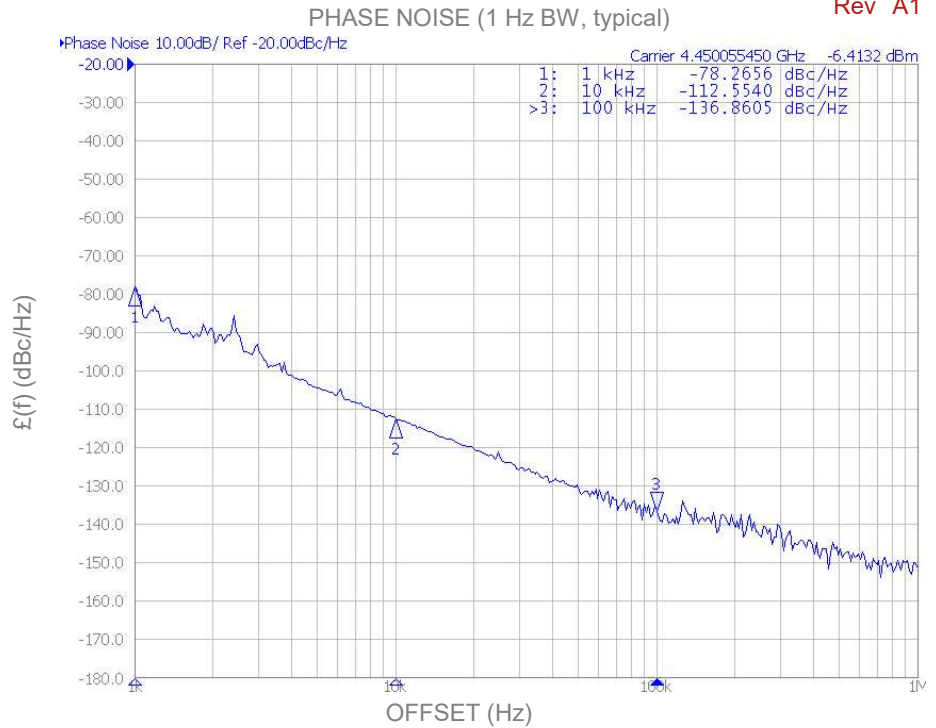
Voltage-Controlled Oscillator Surface Mount Module

Applications

Radar Systems
 Test Stations
 Satcom

Application Notes

AN-101: Mounting and Grounding
 AN-102: Output Loading
 AN-107: Manual Soldering

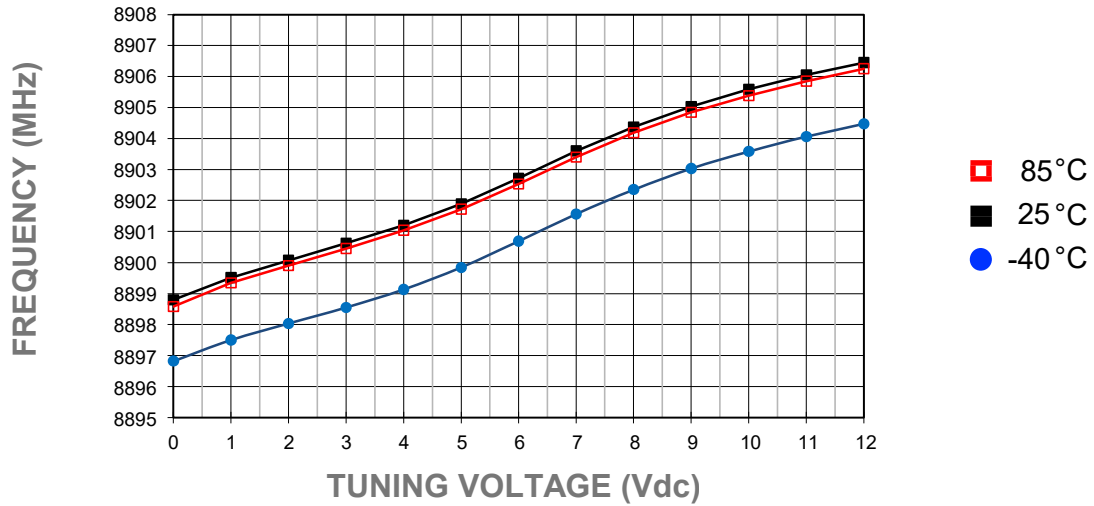


| Performance Specifications | Min | Typ | Max | Units |
|---------------------------------------|------|------|------|--------------------|
| Oscillation Frequency Range | 8900 | | 8900 | MHz |
| Phase Noise @ 10 kHz offset (1 Hz BW) | | -106 | | dBc/Hz |
| Harmonic Suppression (2nd) | | -30 | -25 | dBc |
| Tuning Voltage | 0 | | 12 | Vdc |
| Tuning Sensitivity (avg.) | | 0.6 | | MHz/V |
| Power Output | -2 | 1 | 4 | dBm |
| Load Impedance | | 50 | | Ω |
| Input Capacitance | | | 50 | pF |
| Pushing | | | 1 | MHz/V |
| Pulling (dB Return Loss, Any Phase) | | | 1 | MHz |
| Operating Temperature Range | -40 | | 85 | $^{\circ}\text{C}$ |
| Package Style | | SDRO | | |

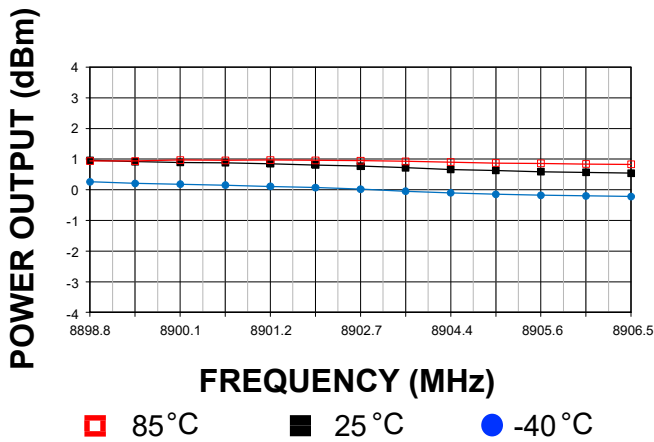
| Power Supply Requirements | Min | Typ | Max | Units |
|----------------------------|-----|-----|-----|-------|
| Supply Voltage (Vcc, nom.) | | 5 | | Vdc |
| Supply Current (Icc) | | 18 | 20 | mA |

Additional Notes

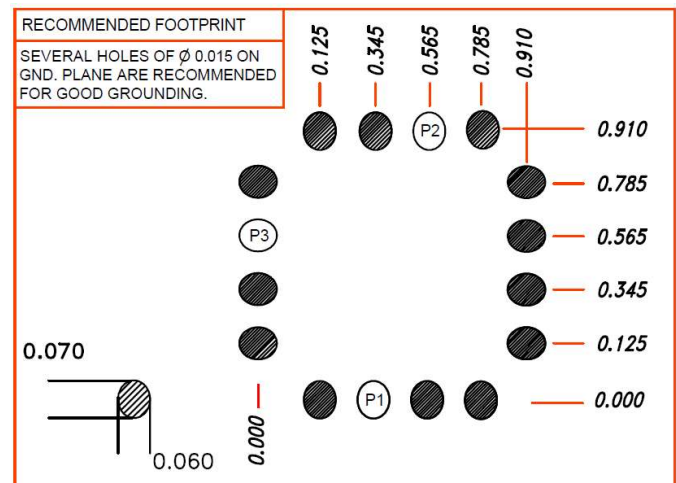
Tuning Curve, typ.



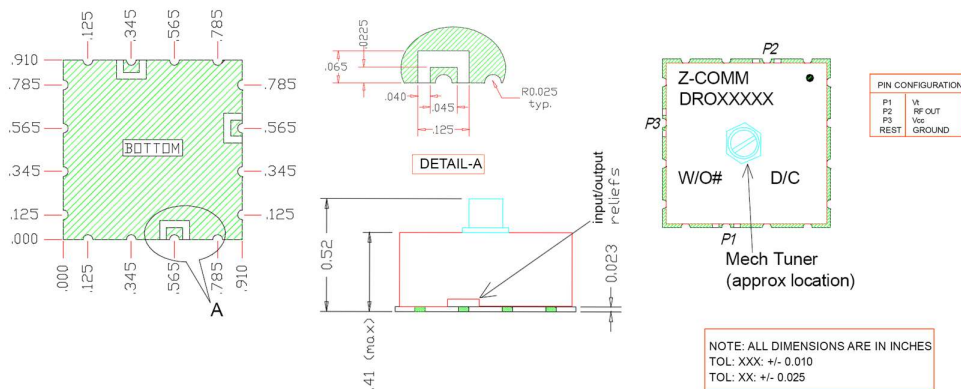
Power Curve, typ.



Footprint



Physical Dimensions



Note: It is not recommended to solder the ground plane under the DRO. Only the outside castellations require soldering for assembly.

LFSuffix = RoHS Compliant. All specifications are subject to change without notice.